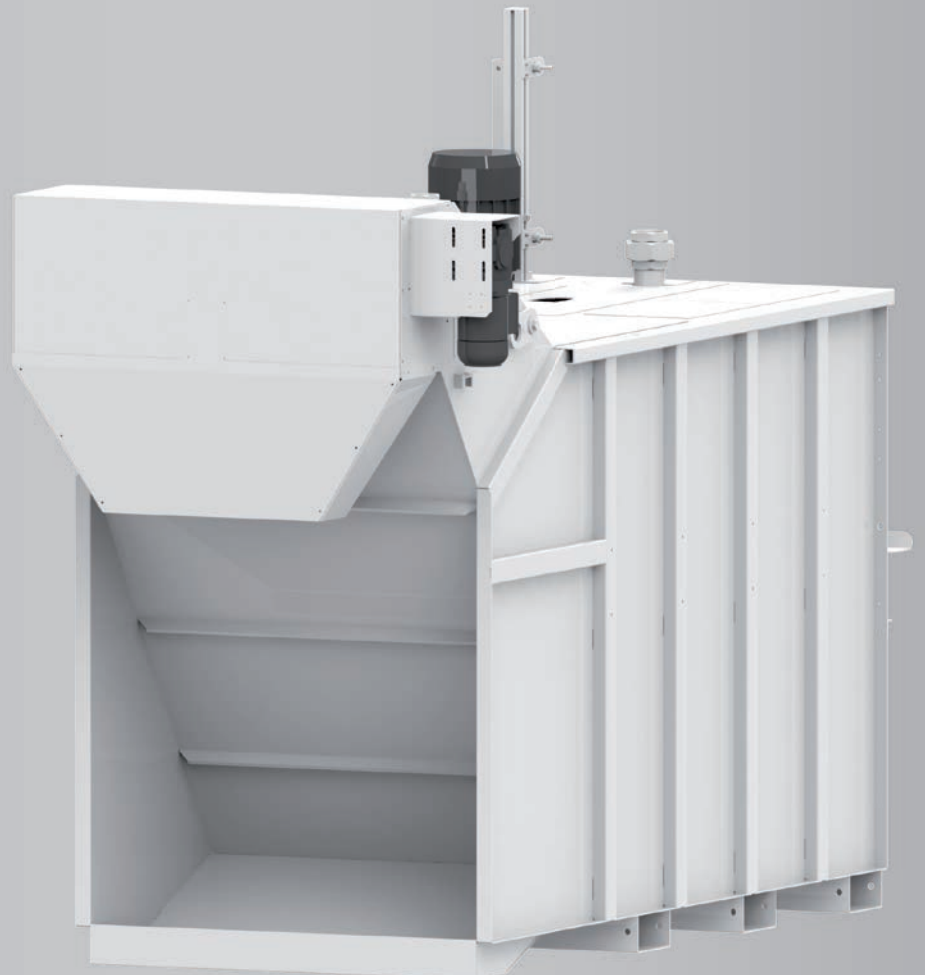
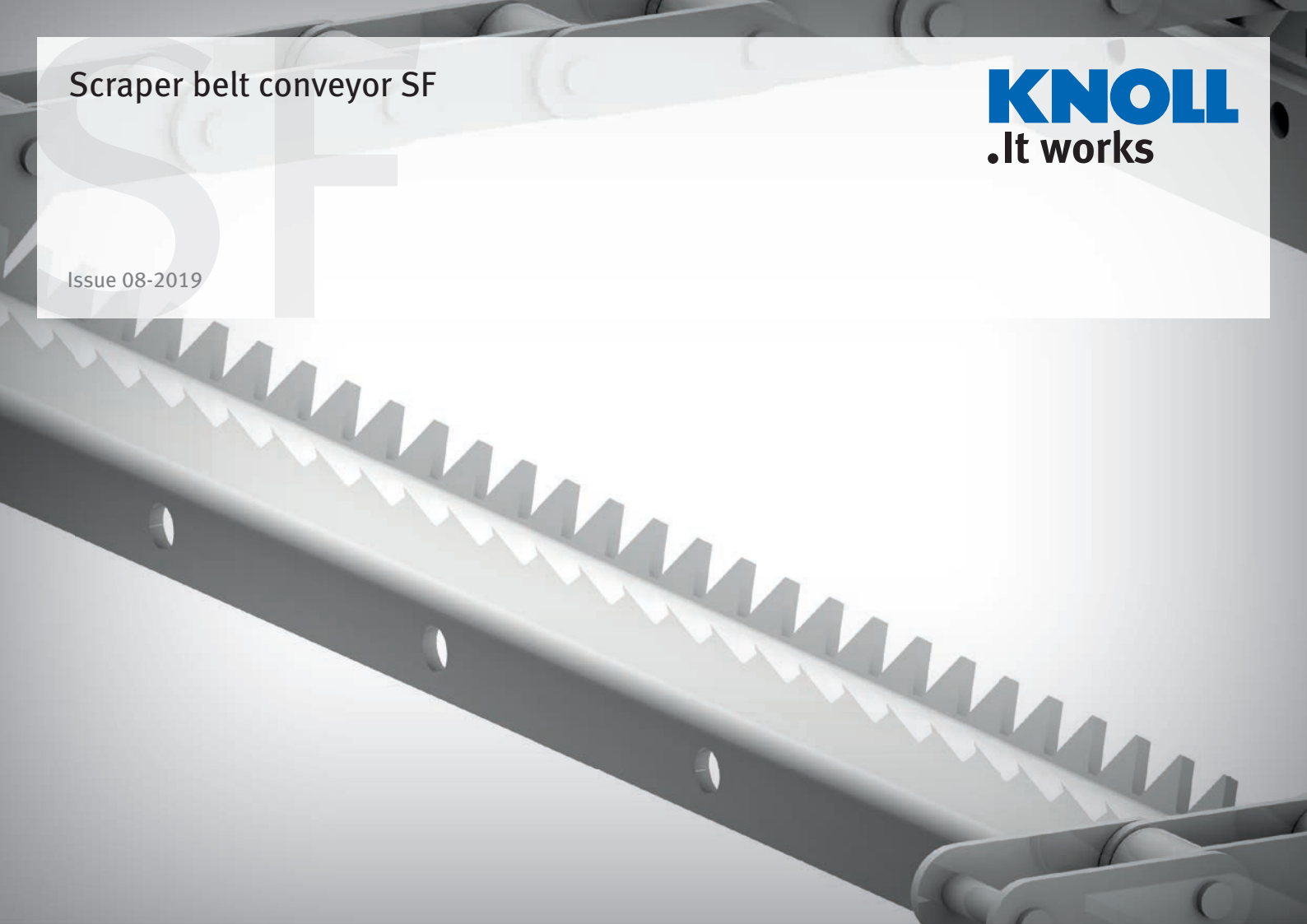


Scraper belt conveyor SF

KNOLL
.It works

Issue 08-2019



Properties

Safety slide coupling

Simple layout

Customer-specific design

Benefits

Effective overload protection

Easy to service

Best-possible addressing of requirements

Application

KNOLL scraper belt conveyors SF are plants for collecting and separating chips and cooling lubricants. For a still better preparation of the cooling lubricant, a filtration process can also be integrated.

- Decentral use on individual and interlinked machine tools
- Central use for waste disposal from machine groups and entire production areas
- Suitable for short steel chips, needle chips (e.g. brass), cast chips, cast abrasion and grinding sludge
- Suitable for wet and dry processing

Description

Main functions

1. Collection of the chip and cooling lubricant mixture
2. Separation of chips and cooling lubricant through segmentation
3. Transporting of the chips/parts to the discharge point on the container bottom
4. Buffering of cooling lubricant
5. Transport of cooling lubricant to the filters
6. Transport of the cooling lubricant to the machines

Continuous scraper belt

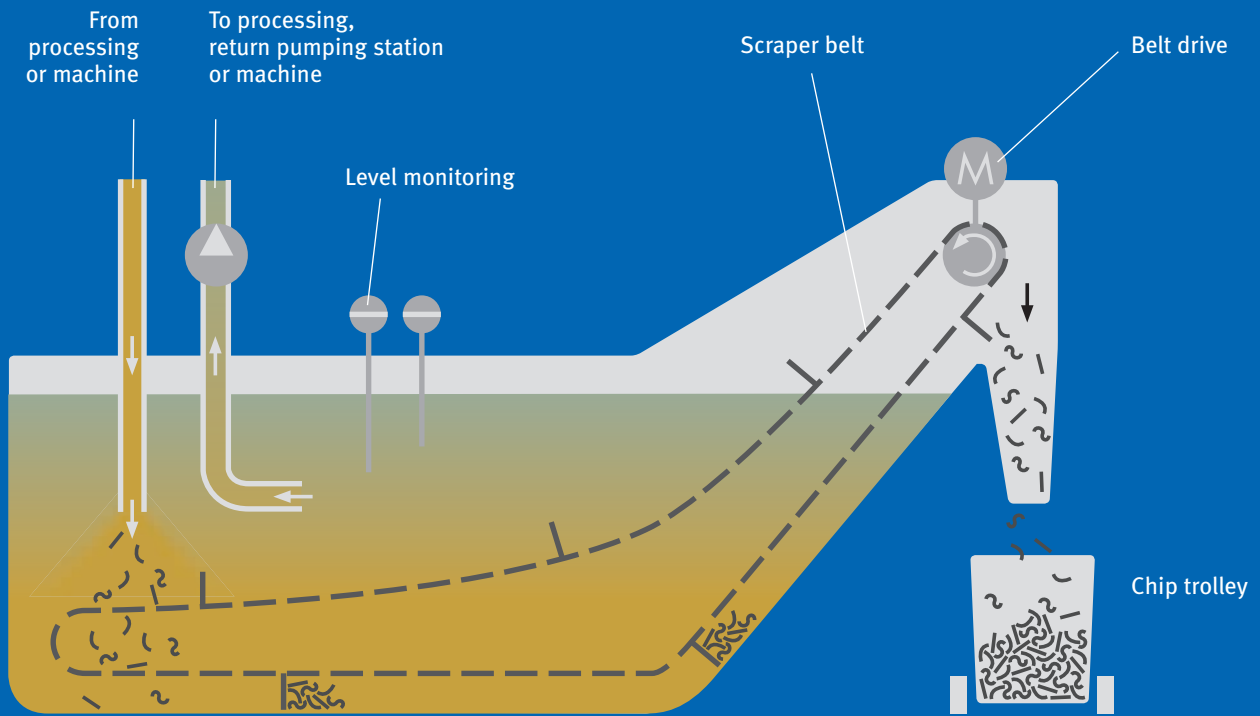
- 2 roller chain strands that are connected to scraper bars
- Unguided chain circulation (hanging belt)
- No rechipping necessary

Combination possibilities

For other requirements, on request we can combine the conveyor systems with

- Systems for retreating chips
- Systems for conveying the chips into containers

Scheme



Equipment

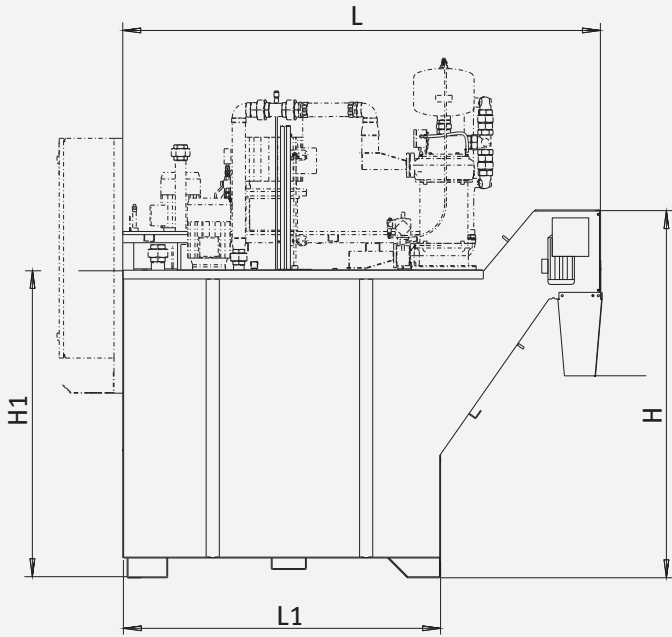
Scraper belt	●
Belt drive (three-phase current geared motor)	●
Safety slide coupling	●
Belt-drive control with limit switch	●
Inlet	●
Level monitoring	●
Discharge hopper	●
Chip trolley	○
Control	○
Filters (e.g. reversable flow filter, hydrocyclone, superfine filter)	○
Lifting pumps for charging the filters	○
Temperature control device	○
Safety catch pan	○
Pump(s) for supply the machine tools	○
Piping and fittings	○
Attached or included tanks for cleaned cooling lubricant	○

- Standard equipment
- Option

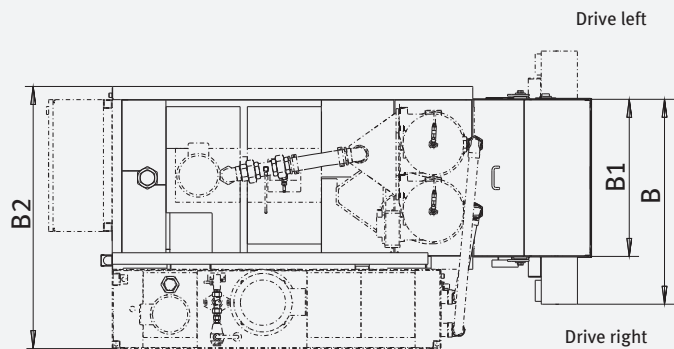


KNOLL Maschinenbau GmbH
 Schwarzachstraße 20
 DE-88348 Bad Saulgau
 Tel. +49 7581 2008-0
 Fax +49 7581 2008-90140
 info.itworks@knoll-mb.de
 www.knoll-mb.com

Dimensions and technical data



Depicted is a system with lifting pump, TURBO reversible flow filter, filtered fluid tank, supply pumps and control



Type	Number of reversible flow filters TURBO	L	B	H	H1	B1	B2	L1	l (l)
SF 500	1	1740	935	1290	1015	720	1110	1200	500/175
	1	1740	935	1290	1015	720	1190	1200	500/300
SF 1000	1-2	2190	935	1675	1400	720	1110	1450	1000/175
	1-2	2190	935	1675	1400	720	1190	1450	1000/350
	1-2	2190	935	1675	1400	720	1340	1450	1000/450
SF 2000	2-3	2690	1245	1890	1400	1030	1140	2250	2000/350
	2-3	2690	1245	1890	1490	1030	1650	2250	2000/600
SF 3500	2-4	2690	1745	1890	1490	1510	2400	2250	3500/500
	2-4	2690	1745	1890	1490	1510	2550	2250	3500/700
SF 3500	4-6	3445	1745	2150	1750	1510	2320	3000	5000/700

Dimensions without units given in mm.